



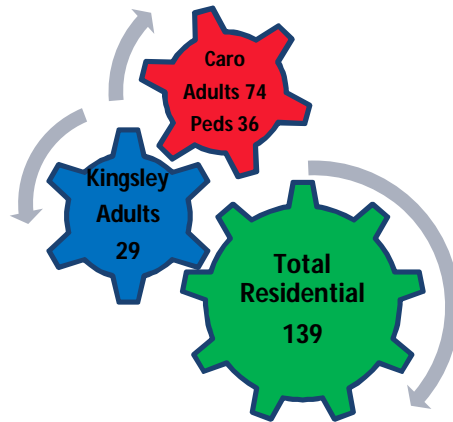
Letting Our Light Shine

2014

Lighthouse Inc. Annual Review

Adult Residential Treatment Program

The Lighthouse provides residential treatment and a comprehensive neurological rehabilitation program for individuals over the age of 18 who have suffered a Traumatic Brain Injury. Services are provided on two campuses; one in Caro and the other in Kingsley Michigan. The program is dedicated to helping each individual achieve their highest level of independence while residing in a home-like environment and receiving phenomenal care.



Adult Residential Program Outcomes		Target	Achieved
Access to Services	Individuals referred to the residential adult program, if appropriate are admitted within 7 days.	75%	84%
Efficiency	Maintain daily census at 85% or greater for adult residential beds.	85%	90.75%
Effectiveness	Each resident will participate in at least 4 community outings per month.	80%	92%
Effectiveness	Maintain skin integrity for immobile adult residents.	90%	93%
Satisfaction	Family members are satisfied with the cleanliness of residential homes.	95%	100%
Satisfaction	Case managers would recommend the Lighthouse to other case managers, claim adjusters, or family members.	95%	100%

2014 in the light:

1. Implementation of the Functional Electronic Stimulation Bike System to prevent or slow disuse atrophy, reduce muscle spasms, and improve range of motion.
2. Development of the Vision Therapy Program to address the complex group of sensory systems and improve the ability of individuals to perform visual tasks.
3. Expansion of Wellness Program and the completion of the First Annual Run, Walk or Roll one mile event. The event was planned and facilitated by residential and day programming clients. All proceeds went to the Leukemia and Lymphoma Society.
4. Collaboration with state colleges and universities to provide meaningful educational internships for more than 20 students.

5. Submission of Federal Application to become a designated

provider of residential treatment services for Veterans who sustained a Traumatic Brain Injury during the course of their deployment to a combat mission.

Pediatric Residential Treatment

The Lighthouse Pediatric program is comprised of two residential homes; Jamie's House and Promised Land, which are both licensed as Child Caring Institutions (CCI) by the State of Michigan. In addition to the homes, the Lighthouse operates an on-campus school, and, works with the Department of Human Services and multiple Community Mental Health Agencies to ensure that transition services are provided in accordance with each child's unique needs.



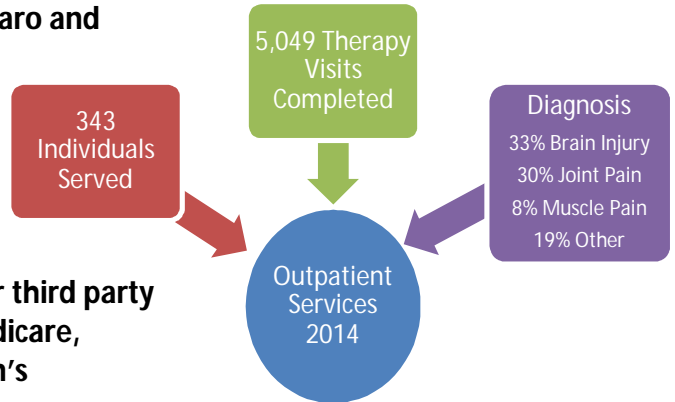
Pediatric (Residential) Program Outcomes		Target	Achieved
Access to Educational Programming	Pediatric inpatients are referred for educational programming within 5 days of admission.	90%	100%
Efficiency	At least 5 students achieve a level of stability that will allow them to transition to an off campus public school.	100%	80%
Effectiveness	Every resident will receive medications as prescribed consistently with at least a 25% reduction in medication errors.	25% Reduction	100%
Effectiveness	Pediatric residents responded with the top ratings when asked if the staff listened to them.	80%	84%
Satisfaction	Pediatric residents report satisfaction with the therapies that they receive.	80%	91%

2014 in the light:

1. Construction of a state of the art, accessible playground outside of Jamie's House.
2. Social worker completion of Level II Childhood Trauma Practitioner Certification.
3. Expansion of staff training in the QBS Safety Care program. Safety Care is utilized to reduce the risk of harm to self or others, with evidence based de-escalation strategies. This resulted in a significant decrease in the number of times that physical intervention needed to be used to ensure safety in the pediatric homes.
4. Multi-tiered educational programming, on-campus school, Caro Public schools and Tuscola ISD center based school, Highland Pines.

Outpatient Therapy Program

The Lighthouse Outpatient Therapy Program operates between the hours of 7:00 a.m. and 6:00 p.m., Monday through Friday, on both the Caro and Kingsley campuses. Services provided include; Physical Therapy, Occupational Therapy, Speech Therapy, Recreational Therapy, Music Therapy, Psychology, Social Work and Psychiatric Services. The program is licensed by the Department of Community Health for the State of Michigan, and participates in most major third party payor programs including but not limited to: Medicare, BlueCross, Tri-Care, Auto No-Fault, and Workmen's Compensation.



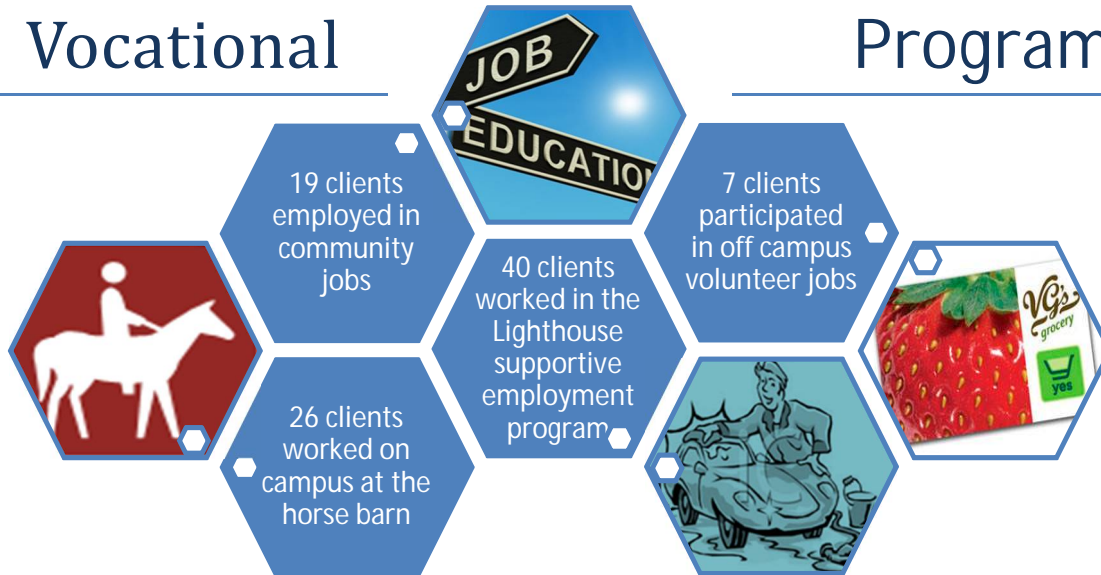
2014 in the light:

1. Physical Therapy Department was named "Best of the Best" in Tuscola County by Advertiser readers.
2. Outpatient Programs expanded to offer hippo-therapy services.
3. Therapy hours expanded from 7:00 a.m. to 6:00 p.m. to accommodate work schedules of outpatient clientele.
4. Community wellness outreach program extended with the provision of free exercise classes for community members.
5. Social worker developed Brain Injury Family Support Group, which was opened for community participation during 2014.

Outpatient Program Outcomes		Target	Achieved
Access to Outpatient Services	Clients report that the Lighthouse provided easy access to services.	80%	94%
Efficiency	Documentation and billing practices result in an 18% or less contractual adjustment of charges.	100%	100%
Effectiveness	Lighthouse provides an equivalent number of outpatient visits compared to 2013.	100%	100%
Effectiveness	Clients report therapy services made them better.	90%	100%
Satisfaction	Survey results indicate that outpatients will return to the Lighthouse, if they need therapy in the future.	90%	94%

Vocational

Program



Vocational Program Outcomes		Target	Achieved
Efficiency	Maintain the level of staffing consistent with 2013, while expanding the number of vocational placements.	100%	100%
Effectiveness	10 or more clients will obtain competitive employment in the community.	100%	100%
Effectiveness	10 or more residents will participate in community volunteer activities.	100%	70%
Satisfaction	15 or more employed clients maintained employment with the same employer for a period of 12 months or more.	100%	100%

2014 in the light:

1. Implemented transitional vocational education program with Tuscola ISD.
2. Established partnership with Human Development Commission for volunteer activities and community service.
3. Expanded landscaping program to train clients on using the rototiller, lawnmowers, spreaders and tree hydration projects.
4. Increased number of placements and duties associated with Hippotherapy program and disabled felines.
5. Expanded enclave duties to include home interior painting in Lighthouse semi-independent residences.