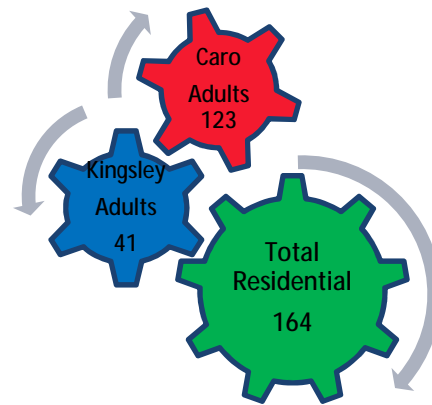


Adult Residential Treatment Program

The Lighthouse provides residential treatment and comprehensive neurological rehabilitation programs for individuals over the age of 18 who have suffered a Traumatic Brain Injury. Services are provided on two campuses; one in Caro and the other in Kingsley Michigan. The program is dedicated to helping each individual achieve their highest level of independence while residing in a home like environment and receiving phenomenal care.



Adult Residential Program Outcomes		Target	Achieved
Access to Services	Individuals referred to the residential adult program, if appropriate are admitted within 7 days.	75%	84%
Efficiency	Maintain daily census at 85% or greater for adult residential beds.	85%	92%
Effectiveness	Each resident will participate in at least 4 community outings per month.	80%	93%
Effectiveness	Maintain skin integrity for immobile adult residents.	90%	96%
Satisfaction	Family members are satisfied with the cleanliness of residential homes.	95%	98%
Satisfaction	Case managers would recommend the Lighthouse to other case managers, claim adjusters, or family members.	95%	100%

2016 in the light:

1. Implementation of the Functional Electronic Stimulation Bike System to prevent or slow disuse atrophy, reduce muscle spasms, and improve range of motion.
2. Expansion of the Vision Therapy Program to address the complex group of sensory systems and improve the ability of individuals to perform visual tasks.
3. Ground breaking for the construction of 15,000 square foot semi-independent living apartment complexes in Caro and Kingsley.
4. Collaboration with state colleges and universities to provide meaningful educational internships for more than 20 students.
5. Extension of therapeutic services treatment spaces and relocation of corporate services to Caro Lighthouse corporate facility.

Pediatric Residential Treatment

The Lighthouse Pediatric program is comprised of two residential homes; Jamie’s House and Promised Land, which are both licensed as Child Caring Institutions (CCI) by the State of Michigan. In addition to the homes, the Lighthouse operates an on-campus school, and, works with the Department of Human Services and multiple Community Mental Health Agencies to ensure that transition services are provided in accordance with each child’s unique needs.



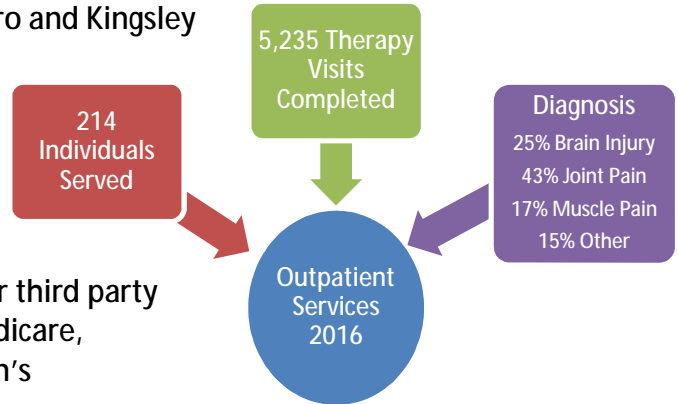
Pediatric (Residential) Program Outcomes		Target	Achieved
Access to Educational Programming	Pediatric inpatients are referred for educational programming within 5 days of admission.	90%	100%
Efficiency	At least 5 students achieve a level of stability that will allow them to transition to an off campus public school.	5students	3 students
Effectiveness	Every resident will receive medications as prescribed consistently with at least a 25% reduction in medication errors.	10 errors or less	> 25% reduction in errors
Effectiveness	Pediatric residents responded with the top ratings when asked if the staff listened to them.	80%	100%
Satisfaction	Pediatric residents report satisfaction with the therapies that they receive.	80%	94%

2016 in the light:

1. Construction of a state of the art, accessible playground outside of Jamie’s House.
2. Increase of Clinical Psychology and Social Work team. Psychologist completion of EMDR certification.
3. Expansion of staff training in the QBS Safety Care program. Safety Care is utilized to reduce the risk of harm to self or others, with evidence based de-escalation strategies. This resulted in a significant decrease in the number of times that physical intervention needed to be used to ensure safety in the pediatric homes.
4. Multi-tiered educational programming, on –campus school, Caro Public schools and Tuscola ISD center based school, Highland Pines.

Outpatient Therapy Program

The Lighthouse Outpatient Therapy Program operates between the hours of 7:00am and 6:00pm, Monday through Friday, on both the Caro and Kingsley campuses. Services provided include; Physical Therapy, Occupational Therapy, Speech Therapy, Recreational Therapy, Music Therapy, Psychology, Social Work and Psychiatric Services. The programs are licensed by the Department of Community Health for the State of Michigan, and participates in most major third party payor programs including but not limited to; Medicare, BlueCross, Tri-Care, Auto No-Fault, and Workmen's Compensation.



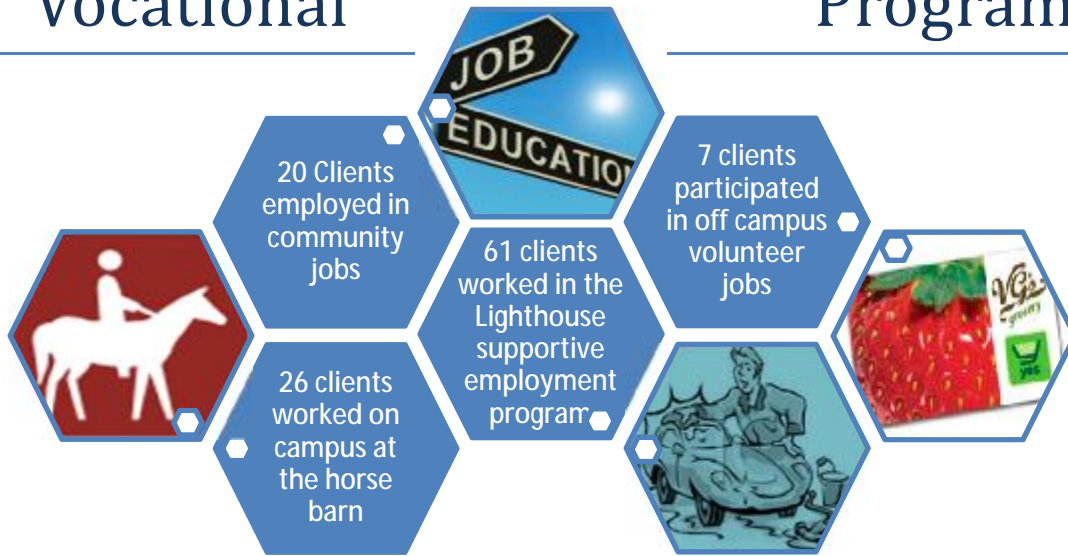
Outpatient Program Outcomes		Target	Achieved
Access to Outpatient Services	Clients report that the Lighthouse provided easy access to services.	80%	97%
Efficiency	Documentation and billing practices result in an 18% or less contractual adjustment of charges.	100%	100%
Effectiveness	Lighthouse provides an equivalent number of outpatient visits compared to 2015.	100%	98%
Effectiveness	Clients report therapy services made them better.	90%	97%
Satisfaction	Survey results indicate that outpatients will return to the Lighthouse, if they need therapy in the future.	90%	100%

2016 in the light:

1. Physical Therapy Department use of FES program and prepared for Zero G system.
2. Outpatient Programs expanded to offer hippo-therapy services.
3. Therapy hours increased from 7:00 am to 6:00 pm to accommodate work schedules of outpatient clientele.
4. Community wellness outreach program increased the participation in the free exercise classes for community members.
5. Social worker developed Brain Injury Family Support Group, which was opened for community participation during 2014.

Vocational

Program



Vocational Program Outcomes		Target	Achieved
Efficiency	Maintain the level of staffing consistent with 2015, while expanding the number of vocational placements.	100%	100%
Effectiveness	10 or more clients will obtain competitive employment in the community.	100%	100%
Effectiveness	10 or more residents will participate in community volunteer activities.	100%	70%
Satisfaction	15 or more employed clients maintained employment with the same employer for a period of 12 months or more.	100%	100%

2016 in the light:

1. Increased community job placements by 40 %.
2. Established partnership with Human Development Commission for volunteer activities and community service.
3. Expanded landscaping program to train clients on using the rototiller, lawnmowers, spreaders and tree hydration projects.
4. Increased number of placements and duties associated with Hippotherapy program and disabled felines.
5. Expanded enclave duties to include home interior painting in Lighthouse semi-independent residences.